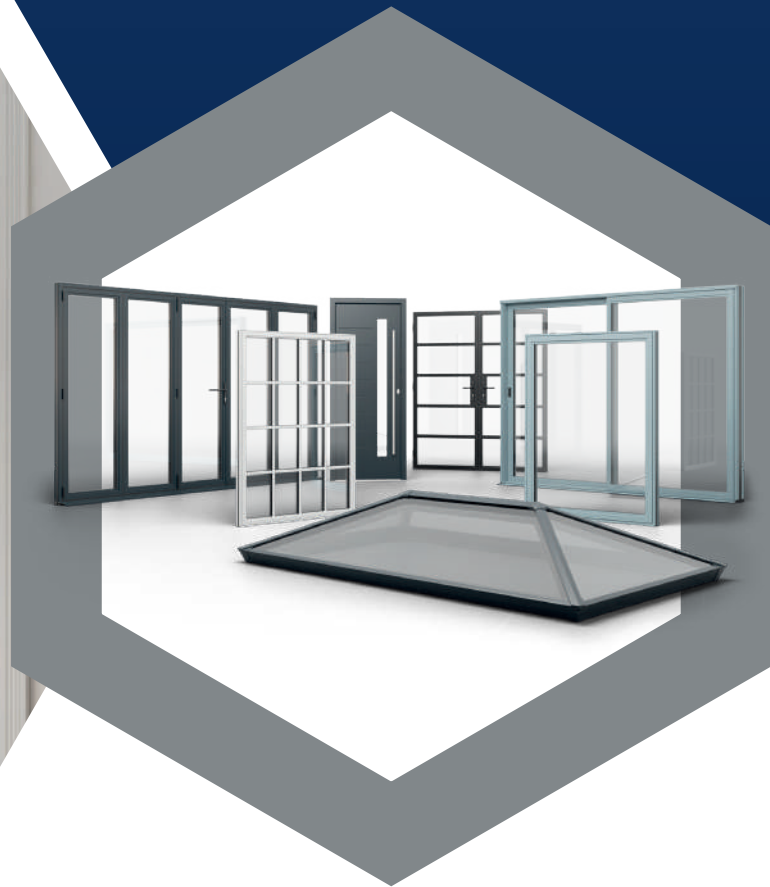




AN INTRODUCTION
**TO THE
SHEERLINE
PRODUCT
RANGE**



SHEERLINE[®]
ALUMINIUM WINDOWS AND DOORS

/ A FRESH APPROACH TO ALUMINIUM

WHAT MAKES US DIFFERENT

PART L

Compliant ✓

Sheerline's mission is to reinvent customers' expectations of aluminium windows and doors, solving many of the issues and frustrations experienced by fabricators and installers.

That's why we have created a range of products based around a common system architecture to reduce stockholding, simplify fabrication, and deliver class leading thermal performance using our own unique Thermlock® technology. Built around a patented corner jointing method, we've built in quality and good looks, with aesthetics that match perfectly across all products.

Produced by us, at our fully vertically integrated, state-of-the-art production facility, we also offer the outstanding levels of service and agility that make Sheerline the competitive advantage you've been looking for.

CONTENTS

4	/ THE SHEERLINE ADVANTAGE
10	/ CLASSIC WINDOWS
12	/ CLASSIC HERITAGE DOOR
14	/ PRESTIGE RANGE
20	/ PRESTIGE BI-FOLD
22	/ PRESTIGE LIFT & SLIDE PATIO
24	/ PRESTIGE COMPOSITE DOOR FRAME
25	/ ANCILLARIES
26	/ S1 ROOF LANTERN
30	/ STYLE OPTIONS
31	/ COLOUR OPTIONS
32	/ PART L COMPLIANCE TABLE
34	/ MORE ABOUT SHEERLINE
40	/ OUR JOURNEY SO FAR



THE SHEERLINE ADVANTAGE



PATENTED CORNER CONSTRUCTION

Improved Quality and Less Waste.

Our patented[†] corner jointing method eliminates the need for crimping and specialised machinery, drastically reducing waste while also speeding up manufacturing. Products can be manufactured on a single work bench with minimal training.

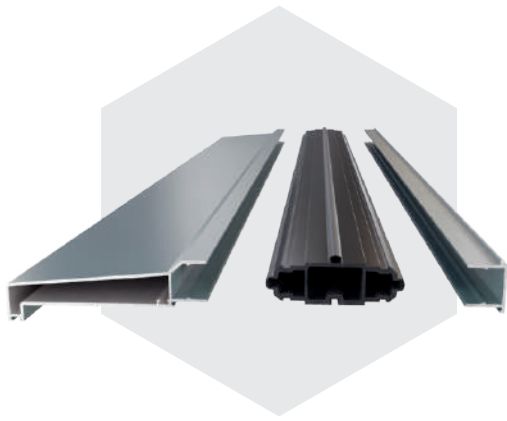
This construction method also helps eliminate misaligned frames, and allows sections damaged during manufacture to be replaced – reducing waste.



PART L APPROVED AS STANDARD

Providing an Easy Route to Compliance.

As the UK moves towards 2025's Future Homes Buildings Standard, the Government has introduced a range of changes to Building Regulations, tightening the thermal efficiency requirements for windows and doors. The good news is that Sheerline's entire range is compliant with these new standards, using standard double glazing, due to our modern system design and the use of our own unique Thermlock[®] technology for thermal breaks.



COMMON CHASSIS DESIGN

Reduced Stockholding.

Many components are shared across our ranges, and products are built from common system wide components, reducing stockholding complexity and cost.



CONSISTENT DESIGN AESTHETICS

Across all Ranges.

With a shared design philosophy and built around the same ingenious and unique engineering principles, Sheerline's aluminium systems are designed to be used seamlessly together. Meaning aesthetics, colours, styles and sightlines match perfectly across a project.



CLASS LEADING SERVICE AND SHORT LEAD TIMES

12 Standard Colours in Just 10 Days.

One of our key 'non product' differentiators is the agility of our service and our short lead-times. As we assemble final product close to dispatch we can even offer dual coloured profile on the same 10 day turnaround – in comparison to six week + for many competitors.

Secured by Design



Official Police Security Initiative

ALL SHEERLINE PRODUCTS ARE OFFERED WITH OPTIONAL SBD ACCREDITATION

Providing homeowners with extra peace of mind.

Insulated with

THERMLOCK[®]

technology

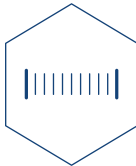
All Sheerline aluminium systems are built around our own unique Thermlock[®] technology.

Our ultra-wide Thermlock[®] thermal breaks benefit from integrated multi-chambered designs, creating efficient insulation inside every Sheerline product. Far superior to smaller two-piece polyamide alternatives.

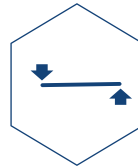
Designed and manufactured by us, Thermlock[®] offers almost double the insulation when compared to polyamide. Making our windows, doors, bi-folds and lanterns inherently more efficient than systems that use polyamide thermal breaks.



**MULTI
CHAMBERED
THERMAL
BREAK**



**WIDER
INTEGRATED
ONE-PIECE
DESIGN**

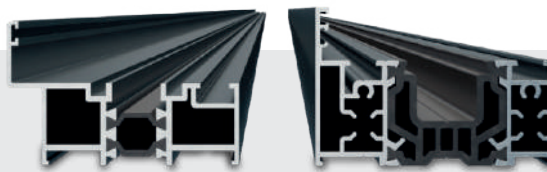


**RIGID AND
MORE
STABLE**



**WARMER
THAN
POLYAMIDE**

Working in conjunction with high-performance, double and triple glazing to create a thermal barrier that reduces heat transfer, Thermlock[®] helps keep homes well insulated against the worst of the UK weather.



Polyamide


0.30 W/mK

THERMLOCK[®]


0.17 W/mK

Sheerline's cills, ancillaries and corner posts also feature this same technology coupled to innovative in-built weather sealing that keep draughts and rain safely outside.

This all goes to make Sheerline the most thermally efficient aluminium system in its class.



KEEPING COMPLIANCE SIMPLE

Our entire range complies with Part L regulations using standard 28mm double glazing.

Our S1 Lantern even includes a unique co-extruded perimeter seal to maintain weather-tightness.

THERMAL CALCULATOR

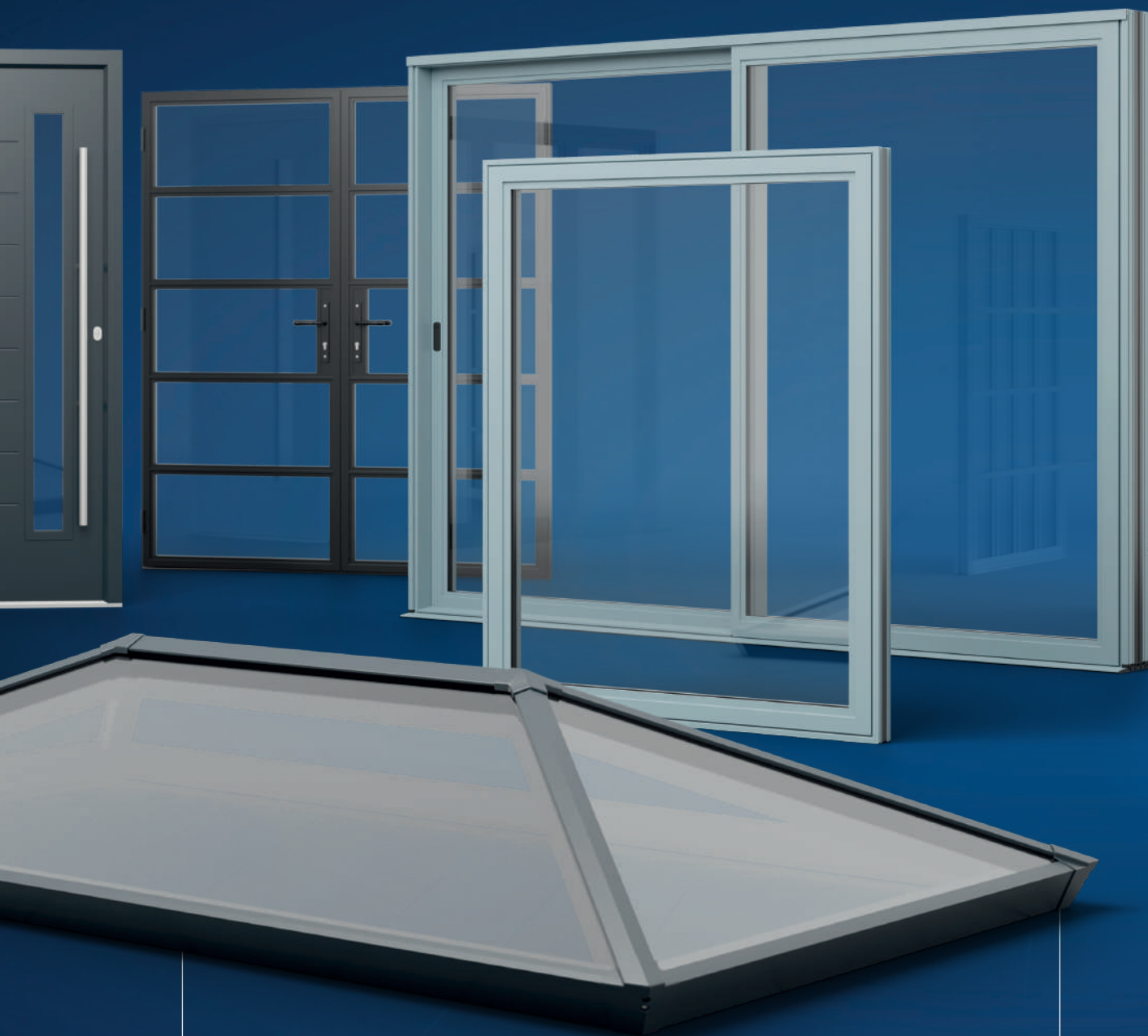
Sheerline fabricators have access to our own easy to use Energy Rating and U-value calculator, putting the power of Thermlock® at their fingertips.





OUR FULLY SUITED PRODUCTS

Built as a truly integrated range, **100% matched.**



AESTHETICS, COLOURS, STYLES AND PERFORMANCE

THAT MATCH PERFECTLY ACROSS ALL PRODUCTS, SHEERLINE IS EASY TO SELL
AND RESULTS IN INSTALLATIONS THAT CUSTOMERS LOVE.

Classic

ULTRA SLIM, HIGH PERFORMANCE ALUMINIUM WINDOWS



**IDEAL FOR HERITAGE STYLE REPLACEMENTS OR
CONTEMPORARY INSTALLATIONS.**

Options: Casements, French, Fixed, Bow & Bay



PART L

Compliant ✓

FIXED FRAME
WINDOWS

36.5MM 49MM

SLIM SIGHTLINES

BEADLESS CASEMENT
& FRENCH

59MM 71.5MM

BEADED CASEMENT
& FRENCH

60.5MM 73MM

Classic IS AVAILABLE AS:



BEADLESS OPTION

Our original, revolutionary beadless window system for customers looking for extra security and unrivalled aesthetics and reduced installation times.



SUPPLIED PRE-GLAZED
meaning there's no need to spend time wedge gasketing or beading on-site.

EASY ONE MAN INSTALL*
with hinges fitting into self-locating slots that hold sashes securely while they are screwed in place.

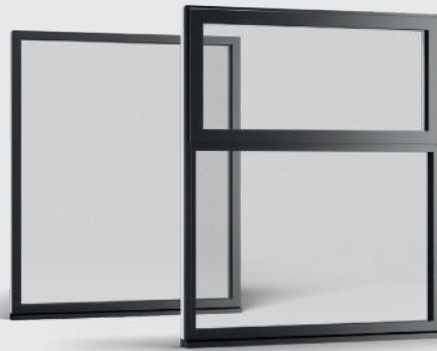
THE MOST BEAUTIFUL CORNERS
with run through mitres on internal joints for the perfect finish that also allows for on-site deglazing if required.

* Subject to weight limits



BEADED OPTION

The beaded option that's fabricator friendly saving time during fabrication plus this option lets you supply frames and glazing separately.



EASY FIT CLIP-IN PRE-GASKETED BEAD
removes the need for wedge gasketing.

VERSATILE CONFIGURATIONS
of opening and fixed light combinations and picture windows.

OPTION FOR 36MM TRIPLE GLAZING
on contemporary styles and fixed frames. Allows for the slimmest picture windows with ultra-thin 36.5mm sightlines.



Classic

HERITAGE DOOR

**COMPLETING OUR ULTRA SLIM
ALUMINIUM RANGE IS THE NEW
CLASSIC HERITAGE DOOR, FEATURING
A PERIOD INSPIRED LOCKBOX DESIGN.**

With Sheerline's signature 'stepped' look consistent across the outside of the door, art deco styling has never looked so good. The new Classic Door also offers the modern levels of thermal performance consumers, and Building Regulations are demanding.



POCKET FEATURE
to the interior and exterior of the lockbox provides a unique heritage look.



SHARED COMPONENTS
reduce stockholding and use standard Classic beads and tooling to simplify fabrication.



DUMMY TRANSOM BARS
create authentically styled single and French doors that homeowners love.



COMPLETING THE CLASSIC RANGE, OUR HERITAGE STYLE DOOR FEATURES A DISTINCTIVE 'RETRO' LOCKBOX FEATURE.

Options: *Single and French Doors*

1.4 U-value
W/(m²K)
Double glazed



PART L

Compliant ✓

SLIM SIGHTLINES

**60.5MM
73MM**

SASH SIZE

MAXIMUM
2.2m x 1m

OPENING

INTERNAL
OR EXTERNAL

Prestige

OUR MOST VERSATILE WINDOW AND DOOR RANGE



PRESTIGE OFFERS THE WIDEST RANGE OF OPTIONS MEANING IT'S SUITABLE FOR THE WIDEST RANGE OF PROJECTS.

Options: Casements, Tilt & Turn, French, Fixed, Bow & Bay, AOV Windows. Single and French Doors

1.4 U-value

W/(m²K)
Double glazed

1.0 U-value

W/(m²K)
Triple glazed

PART L

Compliant ✓

FIXED PICTURE
WINDOWS

**46MM 60MM
70MM**

CASEMENT &
FRENCH WINDOWS

**88MM 102MM
112MM**

SIGHTLINES

TILT & TURN
WINDOWS

**95MM 109MM
119MM**

SINGLE &
FRENCH DOORS

137MM

KEY BENEFITS OF *Prestige*



A CHOICE OF 3 OUTER FRAMES
enables Prestige to accommodate a wide variety of installation situations and plaster reveals.



FULL DEPTH EUROGROOVE
for a wide choice of hardware and cross compatibility with PVC-U systems.

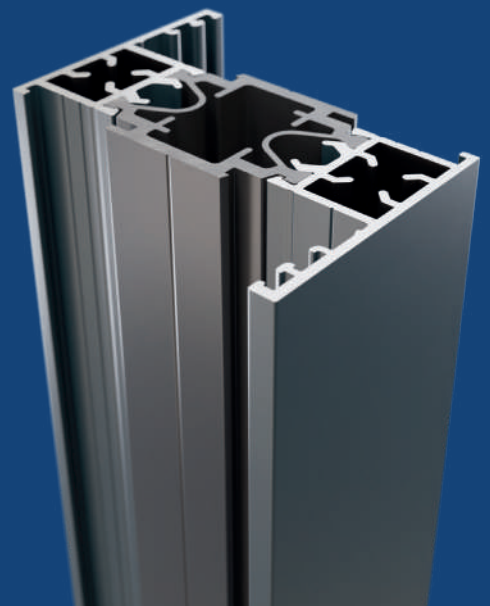


TILT & TURN AND AOV OPTIONS
(Automated Opening Vent) – perfect for commercial contract opportunities.

INTRODUCING OUR ALUMINIUM REVERSE BUTT JOINT

A new patented Z Transom allows for fully internally glazed, fixed next to opening, window combinations.

This elegant solution eliminates the need to use external glazing, costly reverse adaptors or dummy sashes helping with competitive tenders.



FABRICATOR AND INSTALLER FRIENDLY

- 28mm double glazed with pre-gasketed clip-in or shuffle beads
- 36mm or 44mm triple glazing – for improved thermal and acoustic performance
- 17mm stack height for window hinges
- Both window & door lock cases are fully enclosed and don't break through into the glazing, or beading area
- Concealed drainage – like the rest of the Sheerline range



**MAXIMUM
HARDWARE
COMPATIBILITY
WITH A 35MM
BACKSET**

DOOR RANGE

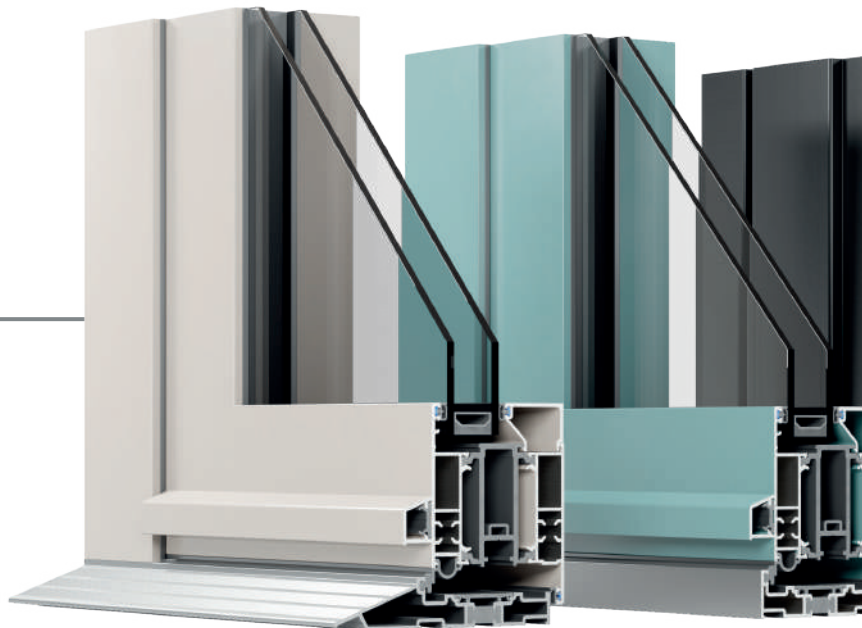
**THE PRESTIGE SYSTEM COVERS BOTH SINGLE AND FRENCH DOORS,
PERFECTLY MATCHING PRESTIGE AND CLASSIC WINDOWS.**

Door sashes also support SFS 3D face mounted PAS24 hinges and the door midrail accommodates standard letterplates. Door combinations can also be manufactured with continuous thresholds that continue across any sidelights for neater and higher quality installations.

PRESTIGE FEATURES

3 PART M COMPLIANT DOOR THRESHOLDS

Door frames easily fix to these thresholds using a universal moulding that's hidden from view externally. A cover strip continues the high-end aesthetics, hiding the fixings, which can be slid under the moulding to aid removal.





Prestige

PERFECT FOR PANORAMIC DOORS



PART L

Compliant



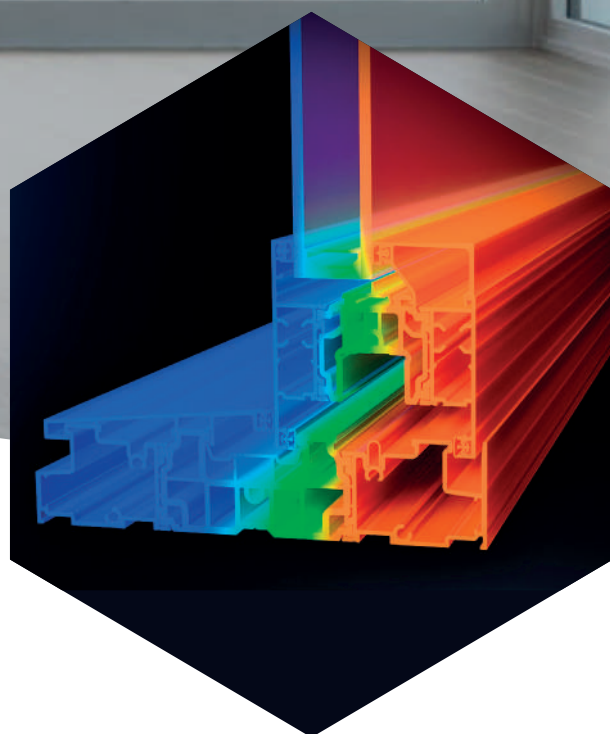
The new Prestige Lift & Slide Patio sits perfectly alongside our existing Prestige Bi-fold, enabling Sheerline customers to offer a choice of perfectly matched panoramic doors that maximise views.

All delivered with the no-nonsense Part L compliance you'd expect from Sheerline. A range that helps you unlock the potential that comes from offering a perfectly matched, high performance aluminium system.



Insulated with
THERMLOCKI[®]
technology

**EXCEPTIONAL
THERMAL PERFORMANCE
IS BUILT INTO EVERY
PRODUCT**



Prestige

BI-FOLDING DOOR

**BEAUTIFUL AESTHETICS
WITH EXCEPTIONAL
THERMAL
PERFORMANCE**

**BEAUTIFULLY BALANCED PRESTIGE BI-FOLDS PROVIDE SLIM,
EQUAL 138MM SASH-TO-SASH SIGHTLINES TO ENSURE LIGHT
BATHES INTERIORS, EVEN WHEN DOORS ARE CLOSED.**

Options: Single, French and Bi-folding Doors

1.4 U-value

W/(m²K)
Double glazed

1.0 U-value

W/(m²K)
Triple glazed

PART L

Compliant ✓

SLIM SIGHTLINES

138MM

SASH TO SASH

110MM

SASH TO OUTER FRAME

MAXIMUM:

HEIGHT **2.6M** WIDTH **6.5M** WEIGHT **120KG***

CONFIGURATIONS

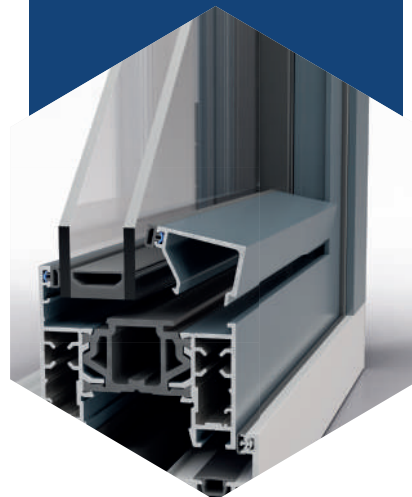
**UP TO 7
PANE**

WITH NO FLOATING
MULLION

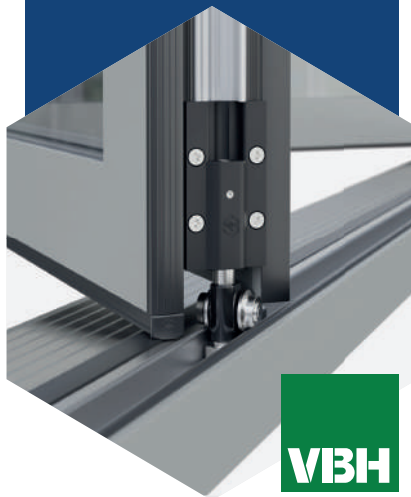
**BESPOKE WINKHAUS
'THUNDERBOLT' LOCKING
WITH ONE PIECE KEEPS
AND INTEGRAL FINGER-
PULL PASSIVE DOOR LOCK**



**PRE-GASKETED CLIP-IN
BEADS - REMOVE THE
NEED TO WEDGE GASKET
OR MILL BEADS**



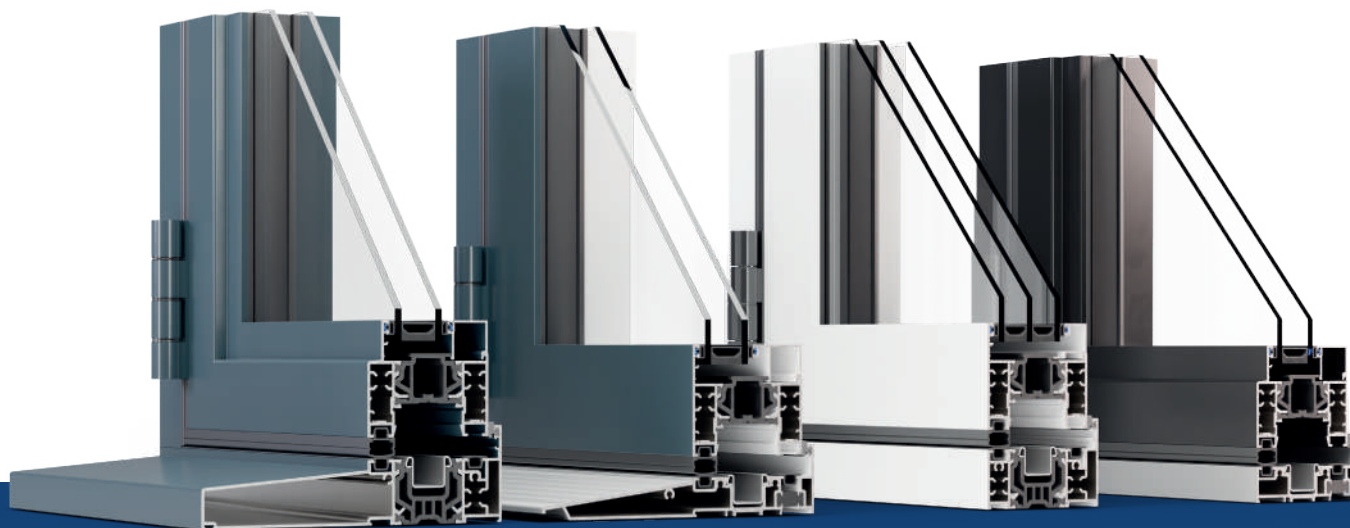
**BESPOKE VBH
HARDWARE BASED ON
PROVEN DESIGNS WITH
PAS24 AS STANDARD**



Featuring a full length high-security interlock on applicable styles as well as one piece keeps for reliable 5-point locking with double deadbolts. All designed to create exceptionally safe and secure doors.

A custom designed VBH single roller also eliminates the need for floating mullions. So whatever the style of door, a consistent 138mm sightline between sashes, creates the trademark Sheerline balanced aesthetic.

Tolerance friendly 12mm spacing between frames and sashes are fabricator friendly. Using many shared standard Prestige components - stockholding complexity and costs are also reduced.



PRESTIGE BI-FOLDS COME WITH FOUR THRESHOLD OPTIONS

All featuring fully weather-sealed rebates ensuring doors aren't over-centred during operation. The integral cill and ramped low thresholds use unique, one-piece end caps which also act as frame jointers, saving time, and incorporating concealed drainage.

Flat bottoms on all thresholds also allows for easy installation, manoeuvrability, and storage.

STREAMLINED BI-FOLDING DOOR RANGE



INTENDED FOR HIGH VOLUME RETAIL AND CONTRACT WORK
AND DELIVERING EXCEPTIONAL VALUE.

PART L

Compliant ✓

Index bi-folds are Part L compliant, able to achieve a double-glazed U-value of 1.4 W/m²K which easily achieves compliance for new homes and non-dwelling commercial projects.

DOUBLE GLAZING

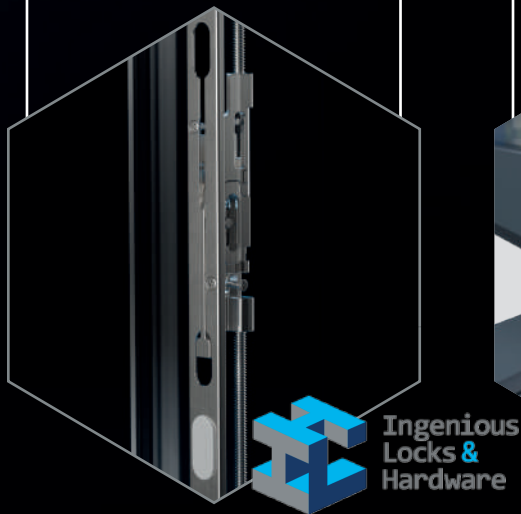
1.4 U-value

44MM TRIPLE GLAZING

1.0 U-value

INDEX BI-FOLD AT A GLANCE

BESPOKE INGENIOUS LOCKING WITH ONE PIECE KEEPS AND INTEGRAL FINGER-PULL PASSIVE DOOR LOCK



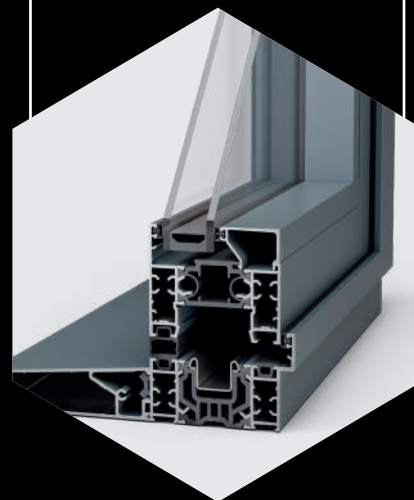
Featuring a full length high-security interlock on applicable styles as well as one piece keeps for reliable 5-hook locking. All designed to create exceptionally safe and secure doors.

BESPOKE VBH HARDWARE BASED ON PROVEN DESIGNS WITH PAS24 AS STANDARD



A custom designed VBH single roller also eliminates the need for floating mullions. So whatever the style of door, a consistent 134mm sightline between sashes, creates the trademark Sheerline balanced aesthetic.

PRE-GASKETED CLIP-IN BEADS - REMOVE THE NEED TO WEDGE GASKET OR MILL BEADS



Tolerance friendly 12mm spacing between frames and sashes are fabricator friendly. Using many shared standard Prestige components - stockholding complexity and costs are also reduced.

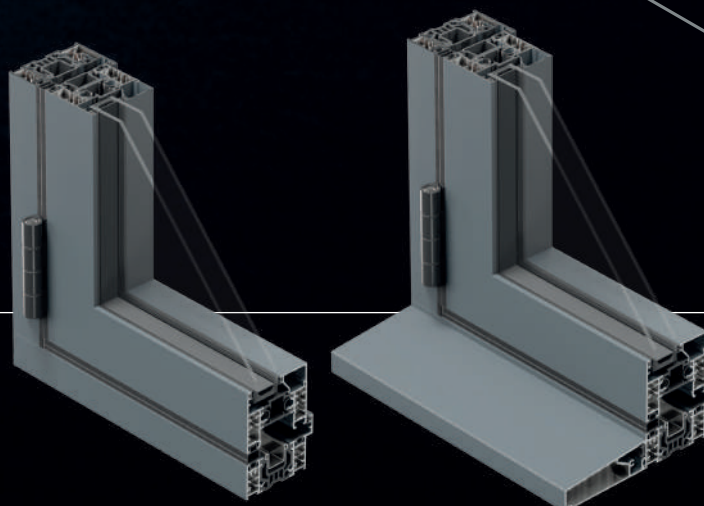
INDEX IS AVAILABLE AS STANDARD IN OUR THREE MOST POPULAR COLOURS.

Other colours and foil lamination available to minimum order quantities.



**INDEX IS COMPATIBLE
WITH THE MAJORITY
OF PRESTIGE BI-FOLD
ANCILLARIES HELPING
REDUCE STOCKHOLDING
REQUIREMENTS**

**OUTER FRAME &
CONTEMPORARY SASH**
SBF150/SBF351



**OUTER FRAME &
CONTEMPORARY SASH
WITH CLIP-ON CILL**
SBF150/SBF351/SA033

Prestige

LIFT & SLIDE PATIO DOOR

SLIM, MULTI-TRACK ALUMINIUM LIFT & SLIDE

**BESPOKE GEARING BASED ON A PROVEN PLATFORM ENSURES
SUPER SMOOTH AND RELIABLE OPERATION WITH FLAWLESS
AESTHETICS AND EXCEPTIONAL THERMAL PERFORMANCE.**

Sash Options: Available in stepped & contemporary sash options.
To match the rest of the Sheerline range

1.4 U-value

W/(m²K)
Double glazed

1.0 U-value

W/(m²K)
Triple glazed

PART L

Compliant ✓

SLIM SIGHTLINES

106MM

20-31% SLIMMER
THAN MARKET
COMPETITORS

MAXIMUM:

HEIGHT	WIDTH	WEIGHT
2.5M	6.5M	400KG*

TRACK OPTIONS

**DUAL &
TRIPLE**

UP TO **6.5M x 2.7M**



SLIM, STYLISH...

Slim minimalist looks which aesthetically match the rest of the Sheerline range, maximise glass area to make the most of the expansive views homeowners value.

- Super slim sightlines of 106mm frame and sash
- **20-31% slimmer than market competitors**
- Interlocks:
 - 80mm as standard
 - 52mm ultra slim option

...AND SECURE

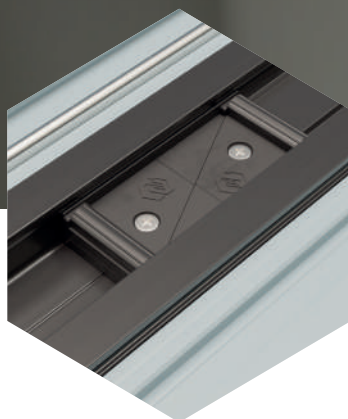
Like the rest of our products the Lift & Slide Patio has been designed to offer high levels of security, with PAS24 accreditation as standard.

High security interlocks bind sashes together to stop unwanted intruders. Rated to 4.5KN.



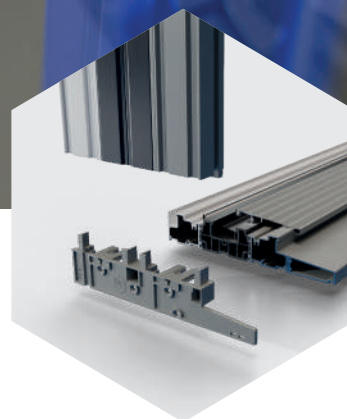
FLUSH JAMBS PREVENT SNAGGING

and help keep visual lines clean and aesthetically pleasing.



PATENTED SEALING ARRANGEMENT

helps ensure Prestige L&S Patio Doors remain weathertight.



FRAMES ARE SQUARE CUT

for easy assembly, and can be delivered flat packed if required.



Using many standard Prestige components, including our standard pre-gasketed clip-in beads, our high-performance Lift & Slide Patio has been designed to be as easy to fabricate as possible, while also allowing outer frames to be quickly assembled on-site if required.

Prestige
COMPOSITE DOOR FRAME

ULTRA-RIGID, PREMIUM ALUMINIUM FRAMES FOR COMPOSITE DOORS

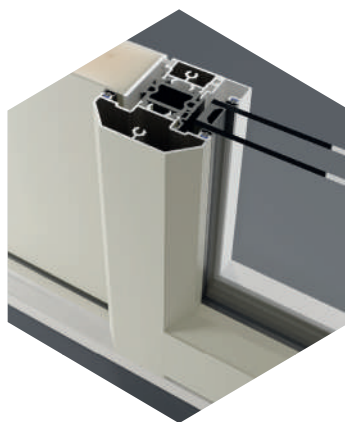
AVAILABLE FOR 44 AND 49MM DOOR SLABS FOR THE
COMPLETE ALUMINIUM LOOK.

SHEERLINE'S COMPOSITE
DOOR OUTER FRAME
ENABLES INSTALLERS
TO OFFER COMPLETE
'WHOLE HOUSE'
ALUMINIUM SOLUTIONS



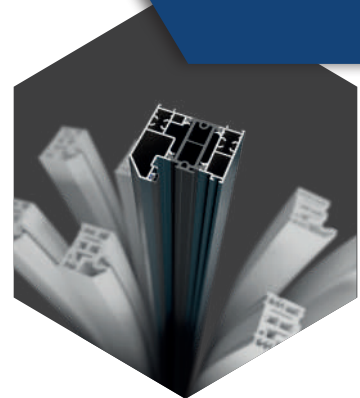
2 THRESHOLD OPTIONS

With low threshold options tested to Part M. Thresholds can also be run continuously under sidelights if required for improved aesthetics.



RUN-THROUGH THRESHOLD

Both thresholds can accommodate a mechanically jointed 'T' transom/mullion, giving slimmer sightlines when doors are configured with sidelights.

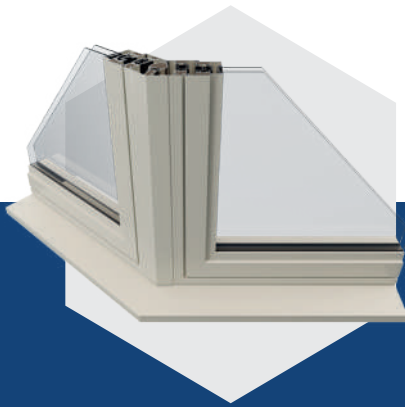


16X MORE RIGID

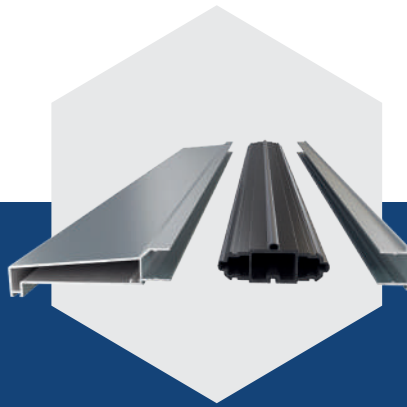
Our composite door outer frame is 16x more rigid than reinforced PVC-u, eliminating door 'bounce', providing a premium feeling door experience.

SHARED ANCILLARIES ACROSS ALL RANGES

All our systems share common, multi-use ancillary components, designed to reduce stockholding and speed up manufacture.



90°, 135°, 150° and variable corner posts all feature Thermlock® technology and slim sightlines.



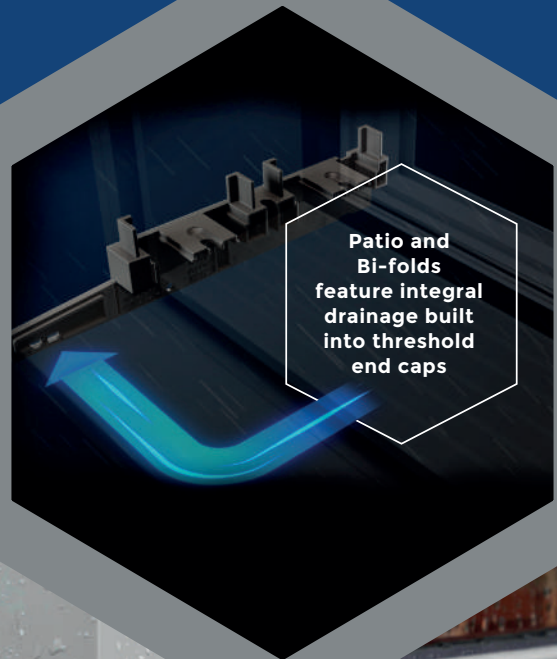
Clip together cills are available in S – XL sizes, easily configurable for dual colour projects.



Our cills sit flush with the back of outer frames, so windows fit perfectly vertically to plaster lines.

Insulated with
THERMLOCK®
technology

Co-extruded weather-seals on clip-together cills and other ancillaries means there's minimal need for silicone sealing, saving time, money and creating more consistent, reliable and weatherproof installations.



Patio and Bi-folds feature integral drainage built into threshold end caps



THE UK'S MOST SECURE, SUSTAINABLE AND STYLISH ROOF LANTERN



**WITH GREAT LOOKS FROM EVERY ANGLE –
DUE TO OUR UNIQUE ULTRA-LOW LINE AESTHETICS.**

Configurations: 13 different roof styles - including pyramids



PART L

Compliant ✓

SLIM SIGHTLINES

50mm

RAFTER, HIP, JACK
RAFTERS AND RIDGE

PITCH

FIXED

25°

MAXIMUM:

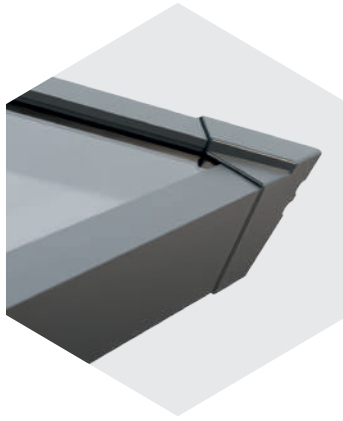
3.2 x 6m

SECURE



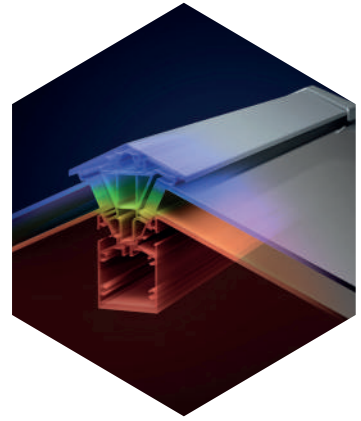
Features such as anti-tamper security screws, a patent pending glass lock and the fact that all top caps are protected by overlapping castings, protecting them from attack, make S1 one of the most secure lanterns available.

STYLISH



Clean lines and discreet external aesthetics create an exceptional looking roof with corner and rafter end caps that run perfectly parallel with the perimeter of the roof. While deep internal rafter and ridge bars create a high end architectural aesthetic.

SUSTAINABLE



Thermlock® multi-chamber technology, far superior to traditional polyamide, helps make S1 the most thermally efficient lantern in its class. Inbuilt perimeter seals and a snow load rating of 1.2 KN/m² also ensures S1 is ready for the worst of British weather.

NEW 3 WAY OPTION

Adding three more styles to the S1 roof lantern, our new **3 Way option** allows for bigger spans to be catered for without the need for jack rafters.

All with the same sleek aesthetics as our existing 2 and 4 way designs.



FOR S1 LANTERNS AND S2 ROOFS WE ARE ALSO INTRODUCING

SHEERVENT® FLUSH INTELLIGENT VENTILATION

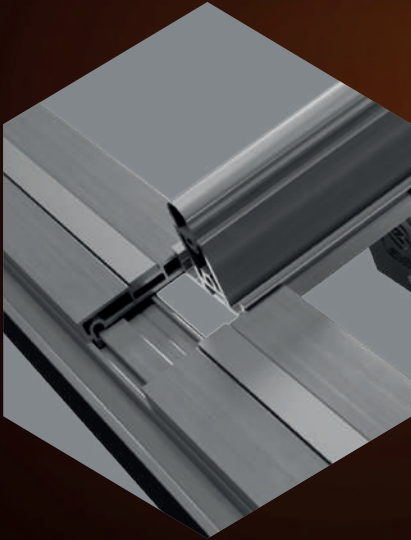
With a sleek minimalist design that sits perfectly flush with S1's rafter bars, and using powered actuators that can be intelligently automated, Sheerline has reimagined roof vents, bringing them into the 21st century at last. Dispensing with the need for muntin bars, SheerVent® offers reliable ventilation without the risk of leaks.

Fully thermally broken and using the same high-performance 28mm glazing as the rest of the S1 roof, SheerVent® is yet another feature that puts the S1 lantern ahead of the competition.

Insulated with
THERMLOCK[®]
technology

THERMAL PERFORMANCE

Thermlock[®] multi-chamber technology used in the eaves beam, ridge and all rafter and hip bars creates an exceptionally thermally insulated lantern. With a unique co-extruded perimeter seal ensuring draughts and rain are kept safely outside, while 28mm glazing allows acoustic dampening glass to be fitted if required.



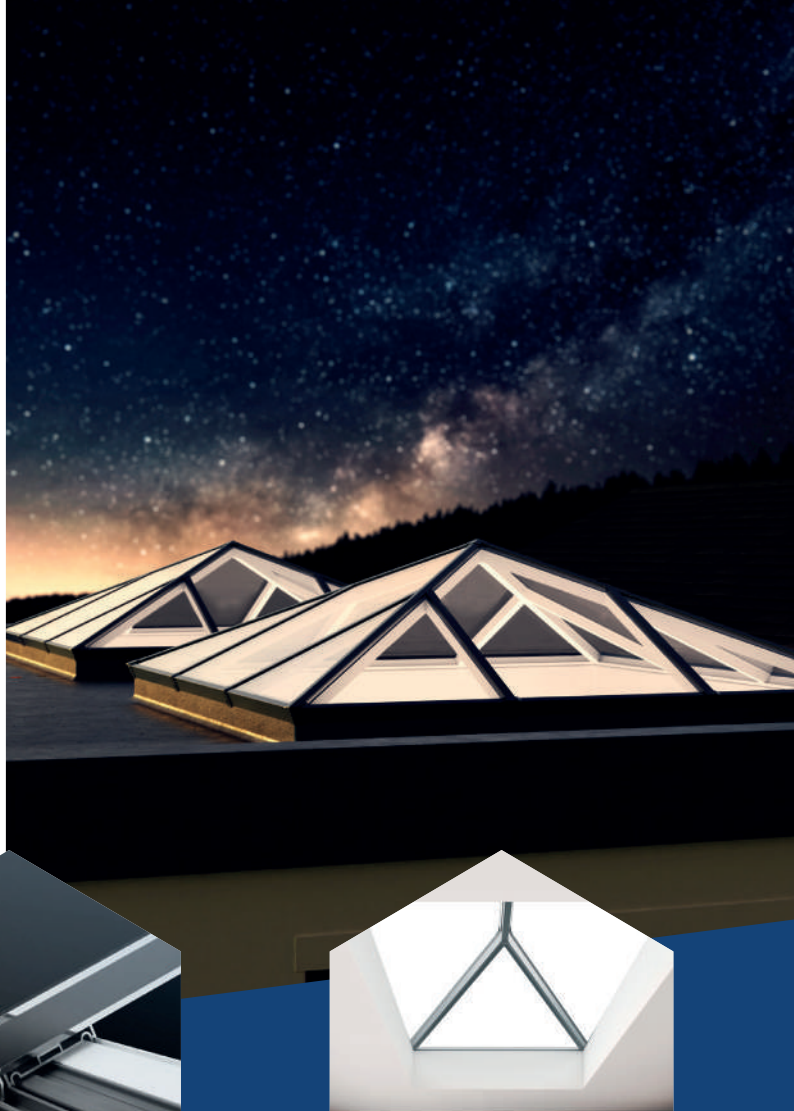
Our eaves beam design also ensures aluminium sections remain internal, preventing cold bridging and condensation issues.



INSTALLER FRIENDLY

Unique hook brackets support the hip rafters during construction, simplifying fitting on site and speeding up installation.

We've also designed out many common issues installers encounter and include internal rafter end caps to prevent bars marking the eaves beam during installation.



STYLE OPTIONS

Available in a choice of 13 styles from square 'pyramid' designs to grander options suitable for larger 'orangery' style installations.

S1 lanterns also feature integral LED light channels – giving an easy way to add lighting to an installation if required.



FABRICATOR'S CHOICE

Available in bar length as well as kits, S1 uses the patented Sheerline corner construction method to create a square and rigid eaves beam, with no complex CNC milling required.

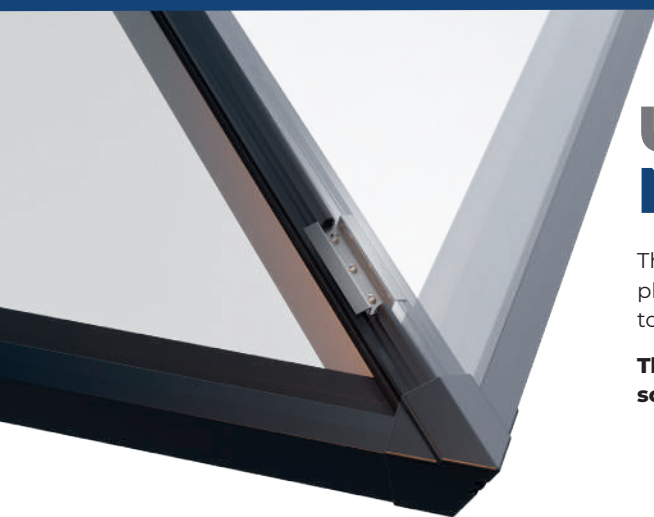
All delivered by Sheerline on a 10 day lead time for standard colours, and 15 days for bespoke options.



REFINED AESTHETICS

Slim, consistent 50mm rafter, hip and ridge sightlines maximise the light flooding into homes, creating the light, airy interiors customers aspire to.

Shallow top caps sit just 8mm above glass to complete the ultra-low profile external aesthetic.



UPGRADE OPTION NOW AVAILABLE



The SBD upgrade uses security clamping plates to lock laminated glass in place, preventing lifting and removal by would-be intruders† even if rafter top caps have been removed.

These stainless steel components are held firmly in place by security screws for added strength.

† Based on SBD's text criteria



CONTEMPORARY



FLUSH
CONTEMPORARY



STEPPED



FLUSH
STEPPED

STYLE OPTIONS

Sheerline aluminium windows and doors are available in a choice of two opening sash styles; 'Stepped' – inspired by traditional steel windows – and 'Contemporary' with a more modern minimalist aesthetic. Both styles are available in either our standard outer frame, or as a 'Flush' option that brings both the perimeter and the opening sash perfectly in-line with each other.

SLIM SIGHTLINES



Classic

Fixed Frames

36.5MM | 49MM

Beadless Casement & French Windows

59MM | 71.5MM

Beaded Casement & French Windows

60.5MM | 73MM

Classic HERITAGE DOOR

60.5MM | 73MM

Prestige

Fixed Frames

46MM | 60MM | 70MM

Casement & French Windows

88MM | 102MM | 112MM

Tilt & Turn

95MM | 109MM | 119MM

Doors including French

137MM

Prestige

BI-FOLDING DOOR

Prestige Bi-fold including Single & French

110MM

Prestige LIFT & SLIDE PATIO DOOR

106MM



Rafter, Hip, Jack Rafters & Ridge

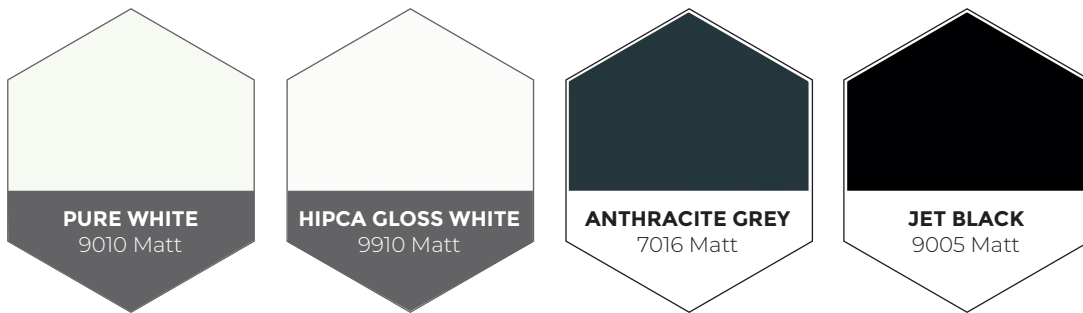
50MM

Surcharges and minimum order quantities will apply for other finishes.

Please enquire for details.



OUR TRADITIONAL COLOURS

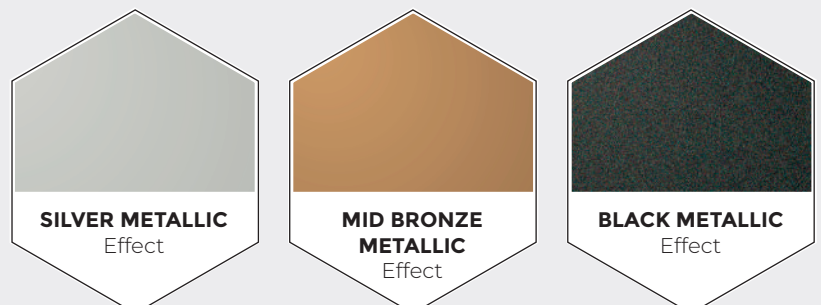


THE CHARACTER RANGE OF PREMIUM COLOURS

Surcharges and minimum order quantities will apply.



THE PARAGON METALLIC EFFECT RANGE



DISCLAIMER Due to the variability of manufacturing processes and the differences in the methods used to represent these colours, we cannot guarantee an exact colour match between the actual paint colour and the colour as seen on-screen or when printed. The RAL colour references are also provided as a guide only and we recommend asking to see a physical sample prior to order if required. All colours and finishes are supplied within standard tolerance ranges.

Technical information, specifications, literature and other materials are provided for illustration only, and may show and refer to product options. The accuracy of such information is not guaranteed and is subject to change without notification. The evaluation and selection of products and determining whether products are suitable for their intended use should be discussed between the end user and the installer/fabricator, as this falls outside our remit as system component manufacturer.

**COMBINE THE COSY
WARMTH OF WOOD,
TO THE SLIM,
ARCHITECTURAL
LOOK OF ALUMINIUM**



With all the benefits Sheerline has gained a reputation for, such as, straightforward Part L compliance thanks to unique Thermlock® thermal breaks.

Available in single and dual colours with our normal powder coated finishes in 7 stocked foils on a 10-day lead time, this new offering is perfect for adding Scandinavian charm to an interior or matching existing frames in a renovation or extension.



7
stocked foils,
available on
10-day
lead times.



BLACK CHERRY
MX



GOLDEN OAK
MX



WHITE
PX



IRISH OAK
MX



ANTHRACITE GREY
7016 MX



BLACK CHERRY
MX




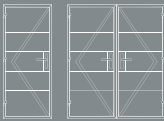


CHARTWELL GREEN
MX

BESPOKE COLOURS AVAILABLE

Choose from an extensive selection of bespoke foils to meet the requirements of any project, available on a 15-day lead time.



PART L COMPLIANCE TABLE

PRODUCT RANGE	 Classic WINDOWS		 Classic HERITAGE DOOR		 Prestige WINDOWS	
	CASEMENT, FIXED & FRENCH STYLES		INCLUDING SIDE, TOPLIGHT & FRENCH COMBINATIONS		CASEMENT, FIXED, FRENCH & TILT & TURN	
	28mm (4/20/4) Clear / Argon / Planitherm* Total+ <i>or</i> 28mm (4/18/6.8) [†] Clear / Argon / Laminated Planitherm Total+		28mm (4/20/4) Clear / Argon / Planitherm* ONE <i>or</i> 28mm (4/18/6.8) [†] Clear / Argon / Laminated Planitherm* ONE		28mm (4/20/4) Clear / Argon / Planitherm* ONE <i>or</i> 28mm (4/18/6.8) [†] Clear / Argon / Laminated Planitherm* ONE	
STYLES						
GLASS SPECIFICATION						
DOUBLE GLAZED						
Method of compliance REPLACEMENT & EXTENSIONS	A WER ✓		1.4 U-Value ✓ A+ DSER ✓ Changed to Planitherm* Total+		1.4 U-Value ✓	
Method of compliance NEW BUILD	1.5 U-Value ✓ Upgraded to Planitherm* ONE <i>or</i> 1.6 U-Value ✓		1.4 U-Value ✓		1.4 U-Value ✓ <i>or</i> 1.5 U-Value ✓ Changed to Planitherm* Total+	
TRIPLE GLAZED						
36MM 	1.1 U-Value ✓✓✓ 36mm (4/12/4/12/4) Clear / Argon x2 / Planitherm* ONE x2 A WER ✓		-		1.1 U-Value ✓✓✓ 36mm (4/12/4/12/4) Clear / Argon x2 / Planitherm* ONE x2 1.2 U-Value ✓✓ 36mm (4/12/4/12/4) Clear / Argon x2 / Planitherm* Total+ x2 <i>or</i> as above with Laminated Clear (4/12/4/10/6.8)	
44MM	-		-		1.0 U-Value ✓✓✓✓ 44mm (4/16/4/16/4) Clear / Argon x2 / Planitherm* ONE x2 <i>or</i> as above with Laminated Clear (4/16/4/14/6.8) 1.1 U-Value ✓✓✓ 44mm (4/16/4/16/4) Clear / Argon x2 / Planitherm* Total+ x2 <i>or</i> as above with Laminated Clear (4/16/4/14/6.8)	

PLEASE NOTE

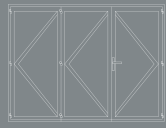
[†]We have shown the internal low-e pane laminated in our WER specification as this maximises the g-value (solar gain), giving the best possible WER result.

*The low-e (Low-Emissivity) glass we've shown in our WER examples is Planitherm Total+, but similar results can be achieved with other 5% low-e glass options such as Guardian ClimaGuard A, or Pilkington K Glass S.

The thermal control glass shown is Planitherm ONE, but is interchangeable with other 1% low-e glass options such as Guardian ClimaGuard 1.0, or Pilkington Optitherm 1.0.



Prestige
DOORS



Prestige
BI-FOLDING DOOR



INDE
BI-FOLD



Prestige
LIFT & SLIDE PATIO DOOR

INCLUDING SIDE,
TOPLIGHT & FRENCH
COMBINATIONS

28mm (4/20/4)
Clear / Argon / **Planitherm* ONE**
or
28mm (4/18/6.8)[†]
Clear / Argon / **Laminated**
Planitherm* ONE

SINGLE, FRENCH &
BI-FOLDING DOORS
UP TO 7 PANES

28mm (4/20/4)
Clear / Argon / **Planitherm* ONE**
or
28mm (4/18/6.8)[†]
Clear / Argon / **Laminated**
Planitherm* ONE

SINGLE, FRENCH &
BI-FOLDING DOORS
UP TO 7 PANES

28mm (4/20/4)
Clear / Argon / **Planitherm* ONE**
or
28mm (4/18/6.8)[†]
Clear / Argon / **Laminated**
Planitherm* ONE

DOUBLE & TRIPLE
UP TO 4 PANES

28mm (4/20/4)
Clear / Argon / **Planitherm* ONE**
or
28mm (4/18/6.8)[†]
Clear / Argon / **Laminated**
Planitherm* ONE

1.4 U-Value ✓

1.4 U-Value ✓

1.4 U-Value ✓

1.4 U-Value ✓

1.4 U-Value ✓
or

1.5 U-Value ✓
Changed to **Planitherm* Total+**

1.4 U-Value ✓
or

1.5 U-Value ✓
Changed to **Planitherm* Total+**

1.4 U-Value ✓
or

1.5 U-Value ✓
Changed to **Planitherm* Total+**

1.4 U-Value ✓
or

1.5 U-Value ✓
Changed to **Planitherm* Total+**

1.1 U-Value ✓✓✓

36mm (4/12/4/12/4)
Clear / Argon x2 / **Planitherm* ONE** x2

1.2 U-Value ✓✓

36mm (4/12/4/12/4)
Clear / Argon x2 / **Planitherm* Total+** x2
or
as above with **Laminated Clear**
(4/12/4/10/6.8)

1.1 U-Value ✓✓✓

36mm (4/12/4/12/4)
Clear / Argon x2 / **Planitherm* ONE** x2

1.2 U-Value ✓✓

36mm (4/12/4/12/4)
Clear / Argon x2 / **Planitherm* Total+** x2
or
as above with **Laminated Clear**
(4/12/4/10/6.8)

1.1 U-Value ✓✓✓

36mm (4/12/4/12/4)
Clear / Argon x2 / **Planitherm* ONE** x2

1.2 U-Value ✓✓

36mm (4/12/4/12/4)
Clear / Argon x2 / **Planitherm* Total+** x2
or
as above with **Laminated Clear**
(4/12/4/10/6.8)

1.1 U-Value ✓✓✓

36mm (4/12/4/12/4)
Clear / Argon x2 / **Planitherm* ONE** x2

1.2 U-Value ✓✓

36mm (4/12/4/12/4)
Clear / Argon x2 / **Planitherm* Total+** x2
or
as above with **Laminated Clear**
(4/12/4/10/6.8)

1.0 U-Value ✓✓✓✓

44mm (4/16/4/16/4)
Clear / Argon x2 / **Planitherm* ONE** x2
or
as above with **Laminated Clear**
(4/16/4/14/6.8)

1.1 U-Value ✓✓✓

44mm (4/16/4/16/4)
Clear / Argon x2 / **Planitherm* Total+** x2
or
as above with **Laminated Clear**
(4/16/4/14/6.8)

1.0 U-Value ✓✓✓✓

44mm (4/16/4/16/4)
Clear / Argon x2 / **Planitherm* ONE** x2
or
as above with **Laminated Clear**
(4/16/4/14/6.8)

1.1 U-Value ✓✓✓

44mm (4/16/4/16/4)
Clear / Argon x2 / **Planitherm* Total+** x2
or
as above with **Laminated Clear**
(4/16/4/14/6.8)

1.0 U-Value ✓✓✓✓

44mm (4/16/4/16/4)
Clear / Argon x2 / **Planitherm* ONE** x2
or
as above with **Laminated Clear**
(4/16/4/14/6.8)

1.1 U-Value ✓✓✓

44mm (4/16/4/16/4)
Clear / Argon x2 / **Planitherm* Total+** x2
or
as above with **Laminated Clear**
(4/16/4/14/6.8)

1.0 U-Value ✓✓✓✓

44mm (4/16/4/16/4)
Clear / Argon x2 / **Planitherm* ONE** x2
or
as above with **Laminated Clear**
(4/16/4/14/6.8)

1.1 U-Value ✓✓✓

44mm (4/16/4/16/4)
Clear / Argon x2 / **Planitherm* Total+** x2
or
as above with **Laminated Clear**
(4/16/4/14/6.8)



/ A CLOSER LOOK

MORE ABOUT



ABOUT US

Garnalex (Garner Aluminium Extrusions Ltd) was formed by Roger Hartshorn in 2018 and is one of only a few UK based aluminium system houses.

Specialising in the agile supply of Grade 6063 Aluminium Extrusion to companies nationwide, using a state-of-the-art energy efficient SMS aluminium HYBREX press.

Sheerline is the innovative brand of aluminium windows, doors and roof lantern systems, designed and extruded by Garnalex. Launched in 2020, the Sheerline system was created to revolutionise the way aluminium windows were fabricated, installed and sold.

Garnalex's team of technical experts looked at every aspect of aluminium windows and doors, from how they're made and installed, how they perform and look, to the service and support required, resulting in the innovative Sheerline range.



WITH OVER £19M INVESTED TO DATE,

we pride ourselves in offering industry leading quality, reliability,
and agility of supply, all delivered by our experienced team of
fenestration professionals.



/ THE SHEERLINE SYSTEM

MADE IN BRITAIN

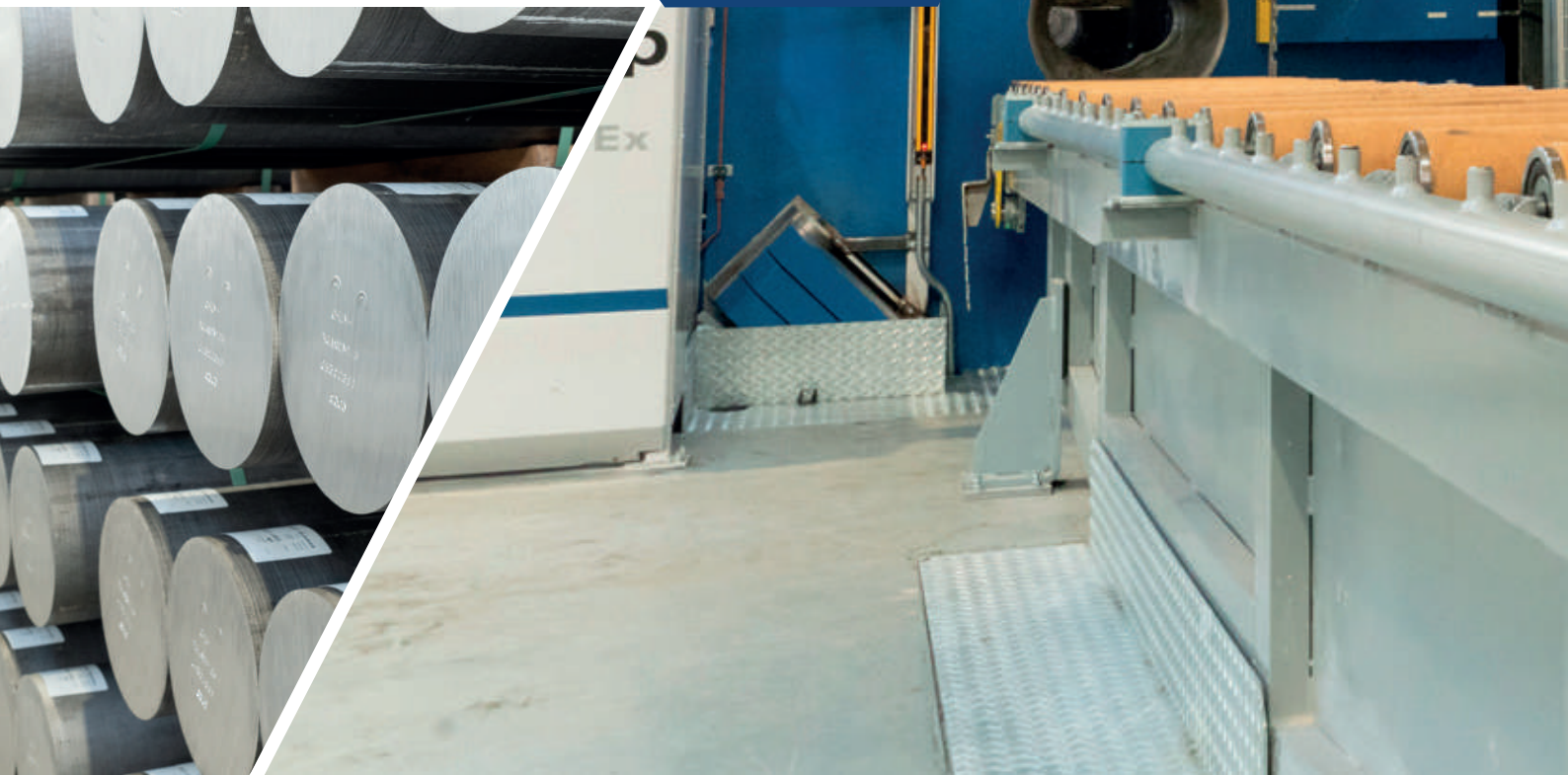
We are on a mission to transform what customers expect from aluminium windows and doors. From design and testing, to the manufacture of every major component at our state-of-the-art facilities, we are passionate about every element that goes into producing the Sheerline system.

With greater control over our supply chain than competitors, we can offer customers more reliable supply and unbeatable service.



**Proudly designed
and manufactured
in the heart of the UK.**

**We even source our
aluminium directly
from Wales.**





This continued investment in truly vertically integrated UK manufacturing is vital to our ability to offer our Sheerline customers the very best service and quality possible while maximising efficiency.

VERTICALLY INTEGRATED

Since our formation we have invested over £15 million in our state-of-the-art production facility, including recently investing over £1.3 million in our own Qualicoat approved powder coating facility. Bringing the most important secondary process that happens to our Sheerline aluminium range after it has been extruded, in-house for the first time.

This high level of vertical integration ensures we are able to fulfil orders on time and in full, as well as giving us direct control over quality checks, with the ability to rectify any issues in hours rather than weeks – ensuring Sheerline's service levels are best-in-class.



**OUR
STATE-OF-THE-
ART SMS HYBEX
ALUMINIUM PRESS
IS INSTALLED**

THE 170-TONNE PRESS THAT SITS AT THE HEART OF OUR OPERATION USES 55% LESS ENERGY THAN CONVENTIONAL PRESSES



AN INITIAL INVESTMENT OF OVER £9 MILLION TRANSFORMED THE SITE INTO A STATE-OF-THE-ART MANUFACTURING FACILITY

2019

Classic

MARCH | Our Classic ultra slim, beadless window system was the first product launched under Garnalex's Sheerline brand. Coinciding with the first national Covid lockdown, take-up was slower than planned, but interest remained high throughout.

LAUNCH SHEERLINE TO 6 LAUNCH PARTNERS

2018

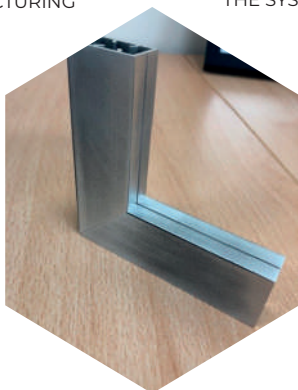
8/2/2018 GARNER ALUMINIUM EXTRUSIONS LTD FORMED



L.B. Plastics Ltd

2018 | LB PLASTICS IS PURCHASED BY GARNER HOLDINGS TO STRATEGICALLY FORM A PART OF THE GROUP'S VERTICALLY INTEGRATED UK MANUFACTURING

2018 | AN EXPERIENCED TEAM OF INDUSTRY EXPERTS WORK ON TRANSFORMING ROGER'S VISION INTO REALITY - PROTOTYPES LIVE UP TO EXPECTATIONS, PROVING THE BENEFITS AND FEASIBILITY OF THE SYSTEMS DESIGN



INVESTMENT CONTINUES APACE WITH OWN FLEET OF DELIVERY VEHICLES, COMBI-LIFTS AND ASSEMBLY LINE OPERATION



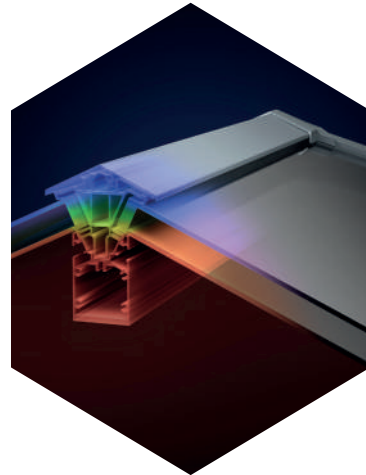
£2 MILLION INVESTMENT IN NEW EXTRUSION LINES AND MOULDING MACHINES TO MANUFACTURE THERMAL BREAKS AND ANCILLARY MOULDINGS

OUR CORE SYSTEM DESIGN IS REVEALED:

- **COMMON COMPONENTS FOR LESS STOCKHOLDING**
- **PATENTED CORNER CONSTRUCTION FOR HIGHER QUALITY AND LESS WASTE**
- **THERMLOCK[®] THERMAL BREAKS OFFER UNRIVALLED PERFORMANCE AS STANDARD**

ALUMINIUM EXTRUSION COMMENCES

OUR JOURNEY SO FAR



2020

JUNE | The first Sheerline product to extend beyond windows and doors, our S1 lantern incorporates innovative design to bring a 'best in class' product to market. Secure, more thermally efficient and with slimmer, more stylish aesthetics than rival products. It is now one of only 2 SBD accredited lantern roofs on the market.

AT THE HEART OF EVERY SHEERLINE SYSTEM IS OUR UNIQUE **THERMLOCK®** TECHNOLOGY - HIGH PERFORMANCE, MULTI-CHAMBER THERMAL BREAKS

Insulated with
THERMLOCK®
technology

SHEERLINE'S UNRIVALLED LEAD-TIME AND SERVICE ADVANTAGE ALSO PROVED TO BE MAJOR DRIVERS OF UPTAKE FROM FABRICATORS

Prestige

JANUARY | This beaded window and door system accommodates a wider range of site requirements than Classic and allows fabricators to supply unglazed frames as well as providing glass and frames separately. Easy to manufacture with exceptional thermal performance.



2021



FURTHER INVESTMENT IN AUTOMATED DIE TRANSFER, ADDITIONAL ASSEMBLY LINE AND TRANSPORT

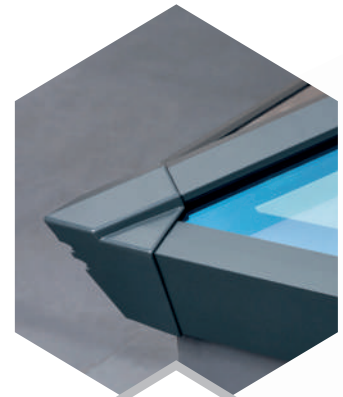
Prestige
BI-FOLDING DOOR

SEPTEMBER | Building on the success of the Prestige range, our bi-folding door range shares many common components with the rest of the system. It has proved a major driver for sales, due to its exceptional thermal performance.

Part L Regulations

An interim move towards 2025's Future Homes Standards saw the thermal requirements tighten for both replacement and new build windows and doors.

This created significant opportunity for Sheerline, as our Thermlock® technology meant our product ranges were already compliant with the new regulations – unlike many of our competitors who are struggling to adapt.



Prestige
COMPOSITE DOOR FRAME

MAY | Composite Door Outer Frame added to the Prestige range, enabling customers to offer 'whole-house' solutions of matched aluminium products.

**PART L
2022**

Compliant ✓

Secured by Design



Official Police Security Initiative

OCT | Secured by Design option added to the S1 lantern roof to further enhance sales.



FURTHER STRENGTHENING OF OUR INTEGRATED MANUFACTURING FACILITIES WITH OUR OWN POWDER PAINTING PLANT

CONTINUING THE SALES MOMENTUM TO EMPOWER GROWTH



£1.3M INVESTMENT IN OUR OWN POWDER COATING PLANT TO REDUCE CARBON FOOTPRINT AND INCREASE CONTROL OF SUPPLY

2022

Classic

BEADED OPTION ADDED

OCT | Featuring the same style of clip-in bead as Prestige. This expansion of the Classic system brings manufacturing flexibility to customers and lets us more directly target competitor products.

BUILDING THE TEAM FOR GROWTH

2022 saw the appointment of several key senior team members in both sales and operational positions in order for us to efficiently maximise our next stage of growth.



S1 3 Way

MAY | A new 3-way option will increase the range of options for our S1 Lantern, allowing for bigger sizes without the use of jack rafters.



SHEERVENT FLUSH INTELLIGENT VENTILATION

JULY | Roof vents reimagined bringing them into the 21st century at last

2023

Classic HERITAGE DOOR

SEPT | Completing our range of heritage inspired products, we are adding a slim door to the current window system. Ideal for exterior and internal doors.

Prestige REVERSE BUTT JOINT

G23

AWARDS

WINNER

RISING STAR

BEN HARTSHORN



NFA23
WINNER

NEW PRODUCT OF THE YEAR

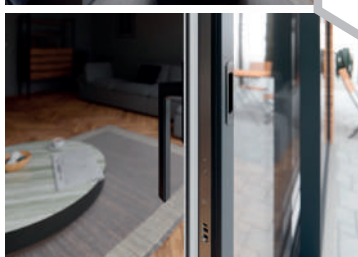
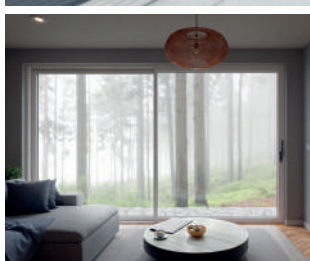


NFA23
WINNER

DIRECTOR OF THE YEAR

Prestige LIFT & SLIDE PATIO DOOR

MARCH | With slim looks and exceptional thermal performance, our Prestige Lift & Slide Patio adds another panoramic door option to the range.



To find out more about any of the products in this guide,
or to explore the opportunities that becoming
a Sheerline customer can bring, please contact us on:

✉ info@sheerline.com ☎ 01332 978000 ✎ sheerline.com

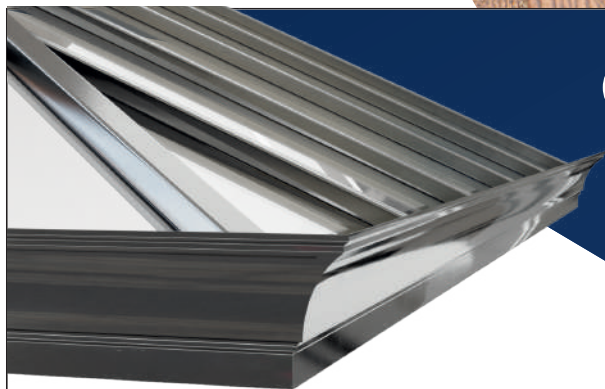
/ IT'S TIME TO DISCOVER

THE SHEERLINE DIFFERENCE



CHAMPIONS OF CHOICE

The Aluminium conservatory
roof you've been
waiting for



**VERSATILE, STYLISH, NEXT
GENERATION DESIGN**
with cutting edge, thermally
efficient performance.

available exclusively from



**CONSERVATORY
ROOF SYSTEM**